



PURACELL II

Mini-Pleat Series

FEATURES

The Glasfloss Puracell II Mini-Pleat Series is designed for use in applications where a high degree of efficiency is required in a 4" filter. The Puracell II Series combines state-of-the-art mini-pleat construction techniques with superior reliability to offer maximum value for commercial and industrial applications. Additionally, the Puracell II offers unique advantages over the traditional 12" rigid box filter including lower freight costs, reduced storage area requirements and less impact on landfills. The Glasfloss Puracell II comes in a variety of sizes and efficiencies.

CONSTRUCTION

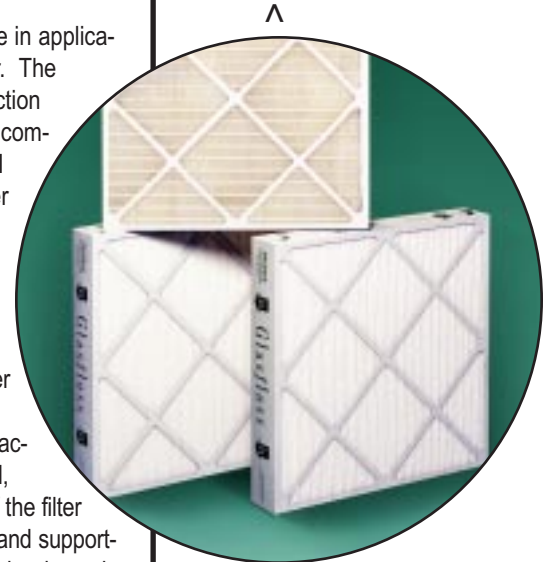
Puracell II filters are manufactured with high efficiency microfiber media, which contains a water repellent binder. These unique fibers are moisture resistant and do not support the growth of bacteria or mold. Each filter incorporates a heavy-duty, double-wall, moisture resistant frame that is bonded around the perimeter of the filter pack. The high efficiency media of the Puracell II is separated and supported by uniform glue beads, which maximize the filtration area and reduce air flow restriction.

APPLICATIONS

The Glasfloss Puracell II Series is designed for use where a high degree of cleanliness is required and contaminants must be removed to protect life, products and/or building interiors. The Puracell II Series is used in a variety of applications such as: hospitals, office buildings, manufacturing plants, micro-electronic component assembly and food processing.

OPTIONS

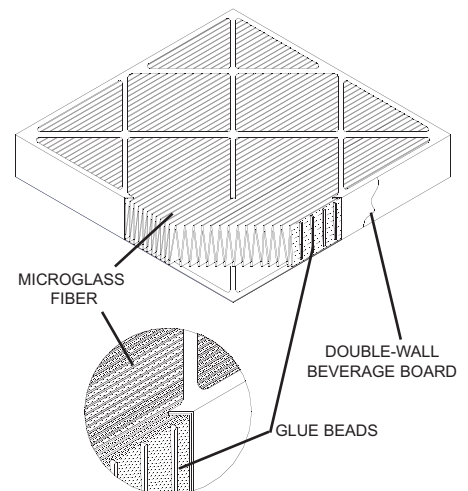
As an option, the Glasfloss Puracell II has an internal channel header that is used to accommodate side access housing units.



- Compact Design for Maximum Air Flow
- Three Efficiencies Available
- Standard and Special Sizes
- Media Will Not Support Microbial Growth

SPECIFICATIONS

The Glasfloss Puracell II filter is a mini-pleat cartridge encapsulated between two heavy-duty, beverage board die cut frames. The die cut frames are bonded together creating a double-wall thickness around the perimeter of the filter. The Puracell II pack is pleated, wet laid microglass fiber media. The pleats are separated and supported by a uniform glue bead that produces a low initial pressure drop while maximizing the filtration area. The media pack is resistant to moisture and does not support the growth of bacteria and mold. The media pack is thoroughly bonded to the interior of the die cut frame. The filter shall be rated to withstand temperatures up to 180 degrees Fahrenheit. The recommended final resistance for Puracell II filters is 1.5" w.g.



Efficiency	60-65%	80-85%	90-95%
MERV	11	13	14



[PURACELL II]

Mini-Pleat Series

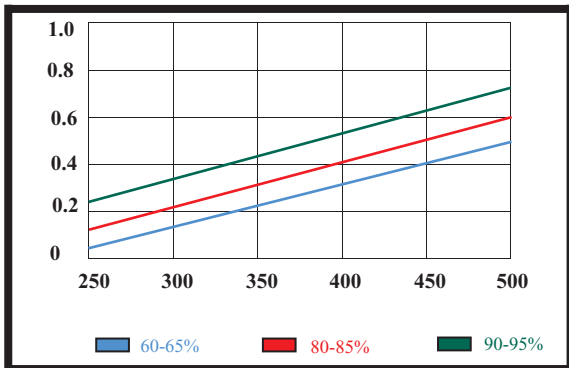
PURACELL II SERIES

MODEL NUMBER	SIZE W x H x D NOMINAL	SIZE W x H x D EXACT	RATED VELOCITY FPM	INITIAL RESIST. IN. W.G.	FINAL RESIST. IN. W.G.	MEDIA SQUARE FEET	SIZE W x H x D NOMINAL MM
90-95% Efficiency - MERV 14							
PURII242449	24 x 24 x 4	23-3/8" x 23-3/8" x 3-3/4"	500	.68	1.50	122.95	610 x 610 x 102
PURII202549	20 x 25 x 4	19-1/2" x 24-1/2" x 3-3/4"	500	.68	1.50	106.26	508 x 635 x 102
PURII202449	20 x 24 x 4	19-3/8" x 23-3/8" x 3-3/4"	500	.68	1.50	101.90	508 x 610 x 102
PURII202049	20 x 20 x 4	19-1/2" x 19-1/2" x 3-3/4"	500	.68	1.50	84.47	508 x 508 x 102
PURIII182449	18 x 24 x 4	17-1/2" x 23-1/2" x 3-3/4"	500	.68	1.50	91.38	457 x 610 x 102
PURIII162549	16 x 25 x 4	15-1/2" x 24-1/2" x 3-3/4"	500	.68	1.50	84.32	406 x 635 x 102
PURIII162049	16 x 20 x 4	15-1/2" x 19-1/2" x 3-3/4"	500	.68	1.50	67.03	406 x 508 x 102
PURIII122449	12 x 24 x 4	11-3/8" x 23-3/8" x 3-3/4"	500	.68	1.50	59.82	305 x 610 x 102
80-85% Efficiency - MERV 13							
PURII242448	24 x 24 x 4	23-3/8" x 23-3/8" x 3-3/4"	500	.60	1.50	118.10	610 x 610 x 102
PURII202548	20 x 25 x 4	19-1/2" x 24-1/2" x 3-3/4"	500	.60	1.50	102.08	508 x 635 x 102
PURII202448	20 x 24 x 4	19-3/8" x 23-3/8" x 3-3/4"	500	.60	1.50	97.89	508 x 610 x 102
PURII202048	20 x 20 x 4	19-1/2" x 19-1/2" x 3-3/4"	500	.60	1.50	81.14	508 x 508 x 102
PURIII182448	18 x 24 x 4	17-1/2" x 23-1/2" x 3-3/4"	500	.60	1.50	87.78	457 x 610 x 102
PURIII162548	16 x 25 x 4	15-1/2" x 24-1/2" x 3-3/4"	500	.60	1.50	80.75	406 x 635 x 102
PURIII162048	16 x 20 x 4	15-1/2" x 19-1/2" x 3-3/4"	500	.60	1.50	64.39	406 x 508 x 102
PURIII122448	12 x 24 x 4	11-3/8" x 23-3/8" x 3-3/4"	500	.60	1.50	57.47	305 x 610 x 102
60-65% Efficiency - MERV 11							
PURII242446	24 x 24 x 4	23-3/8" x 23-3/8" x 3-3/4"	500	.48	1.50	118.10	610 x 610 x 102
PURII202546	20 x 25 x 4	19-1/2" x 24-1/2" x 3-3/4"	500	.48	1.50	102.08	508 x 635 x 102
PURII202446	20 x 24 x 4	19-3/8" x 23-3/8" x 3-3/4"	500	.48	1.50	97.89	508 x 610 x 102
PURII202046	20 x 20 x 4	19-1/2" x 19-1/2" x 3-3/4"	500	.48	1.50	81.14	508 x 508 x 102
PURIII182446	18 x 24 x 4	17-1/2" x 23-1/2" x 3-3/4"	500	.48	1.50	87.78	457 x 610 x 102
PURIII162546	16 x 25 x 4	15-1/2" x 24-1/2" x 3-3/4"	500	.48	1.50	80.75	406 x 635 x 102
PURIII162046	16 x 20 x 4	15-1/2" x 19-1/2" x 3-3/4"	500	.48	1.50	64.39	406 x 508 x 102
PURIII122446	12 x 24 x 4	11-3/8" x 23-3/8" x 3-3/4"	500	.48	1.50	57.47	305 x 610 x 102

Tolerances shall be +/- 1/8" for height, width and +/- 1/16" for depth. Performance values based on ASHRAE and in-house testing methods.

STANDARD PRESSURE DROP

Test Filter Size 24" x 24" x 4" Nominal



MINIMUM PARTICLE SIZE EFFICIENCY

Test Filter Size 24" x 24" x 4" Nominal

