



PROVAC™ 1000

ECONOMICAL, AUTOMATIC VACUUM PACKAGING MACHINE

Our new powerful and reliable automatic ProVac™ 1000 double chamber vacuum packaging machine features simplicity of design and operation. With two 39.0" seal bars in each chamber delivering 10mm robust wide-band hermetic seals, the ProVac 1000 is sure to minimize "leakers" and rework. Its chamber size and automatic lid swing offer exceptional packaging flexibility and productivity for a broad variety of meat, poultry, seafood or dairy products. From individual steaks and chops to tuna loins to large primal cuts, turkeys and cheese blocks, the economical ProVac 1000 is designed for efficient operation by a single worker to produce high-quality, low cost packaging solutions in daily mid-range production environments.

The ProVac 1000's automatic lid swing function sets the pace for the packaging process maximizing single operator productivity as they load product in one chamber while product is being sealed in the chamber at the opposite end. This automatic feature results in increased output and reduced labor costs.



Standard Features

- Durable Stainless Steel Construction
- Flat Deck Design
- 12" Lid
- 10mm Wide-Band Seals
- NEMA 4 Programmable Control Panel
- NEMA 4 Electrical Enclosures
- Soft Air Ventilation
- Automatic Lid Swing w/Safety Guard
- Bladder Activated Sealing
- Eight High Density Plastic Filler Plates
- Pump Overload Warning Indicator
- Oil Change Indicator
- Vacuum Sensor & Display
- Heavy Duty Casters
- One Year Warranty

Optional Features

- **Bi-Active Sealing Applies Heat from Top and Bottom**
For sealing extra thick materials
- **Gas Flush**
Enables modified atmosphere packaging (MAP)
- **Pouch Perforating Knife System**
Mechanical cutting device allows pouches to extend beyond the edge of the seal bar for perfect bag/pouch trimming every time.
- **Others Voltages Available**

KOCH
EQUIPMENT

Built to Koch Equipment's rigid specifications and designed to perform in cold and wet environments for many years, the new ProVac 1000 vacuum packaging machine is manufactured primarily with stainless steel components; a powerful, dependable, 12-horsepower Busch vacuum pump; a flat deck design for ease of sanitation; and a NEMA 4 programmable control panel that stores up to 20 programs for a variety of products, assuring consistency from cycle to cycle.



PROVAC™ 1000

ECONOMICAL, AUTOMATIC VACUUM PACKAGING MACHINE

Oil Change Indicator

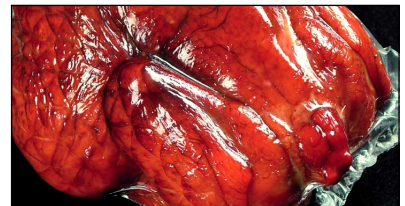
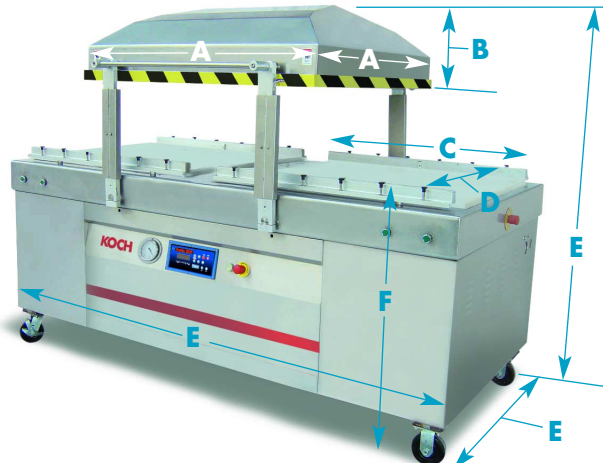
Quick Vacuum Stop Function

NEMA 4 Microprocessor Control Panel

The ProVac 1000's water-resistant control panel enables fingertip control of the entire machine's functions. It is simple to operate and easy to read. Up to 20 packaging programs can be stored to ensure consistency for a variety of product packaging needs. The control panel also features a vacuum sensor control and digital readout to ensure desired vacuum levels are met.

Technical Specifications

MODEL	ProVac 1000	
Chamber Dimensions	A	45.2"L x 43.1" W (1148.1mm x 1094.7mm)
Chamber Height	B	12" (304.8mm)
Seal Bar Length	C	2 x 39.0" (990.6mm)
Distance Between Seal Bars	D	36" (914mm)
Outside Dimensions	E	98"L x 52.2"W x 50.4"H (2490mm x 1325mm x 1280mm)
Working Height	F	36.6" (930mm)
Busch Pump Capacity		12-hp (8.95kw)
Electrical		240V / 60Hz / 3-phase
Cycle Times		90-120 per hour
Weight		2203 lbs. (1000 kg)



For more than 120 years, companies large and small have been looking to Koch Equipment for innovative solutions for their processing, packaging, and labeling equipment needs. Call one of our equipment specialists today, or visit our Web site and let us help your company.

